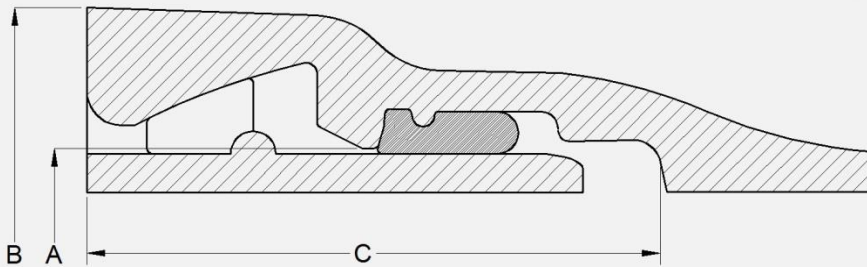


## DUCTILE IRON TR FLEX® FITTINGS

<b>MATERIAL</b>	Ductile Iron Grade 70-50-05 in accordance with AWWA C153 / ANSI A21.53
<b>PRESSURE</b>	350 PSI Water Working Pressure for 4" - 24" & 250PSI for 30 & 36"
<b>TESTING</b>	AWWA C153 / ANSI A21.53 & UL - FM requirements
<b>LAYING LENGTH</b>	AWWA C153 / ANSI A21.53
<b>CEMENT LINING</b>	AWWA C104 / ANSI A21.4
<b>COATING</b>	AWWA C104 / ANSI A21.4
<b>GASKETS</b>	AWWA C111 / ANSI A21.11
<b>STANDARDS</b>	AWWA C153 / ANSI A21.53, AWWA C104 / ANSI A21.4, AWWA C111 / ANSI A21.11

### BASIC SPECIFICATIONS



SIZE	A in	B in	C in
4	4.80	7.11	4.84
6	6.90	9.39	5.27
8	9.05	11.85	5.82
10	11.10	14.12	6.03
12	13.20	16.46	6.30
14	15.30	19.13	7.75
16	17.40	21.33	7.95
18	19.50	23.53	8.19
20	21.60	25.75	8.40
24	25.80	30.15	8.86
30	32.00	37.19	10.28
36	38.30	43.85	10.87

❖ visit [pe.mcwane.com](http://pe.mcwane.com) for more information

❖ All Dimensions are in Inches