




**McWANE
DUCTILE**
IRON STRONG

McWaneDuctile.com



**FABRICATED
FLANGE AND
WALL PIPE**

3"-48"



McWane Ductile is a division of McWane, Inc.

For Generations

FABRICATED PIPE FROM MCWANE DUCTILE

Fabricated Flange & Wall Pipe is manufactured by McWane Ductile in 3" up to 48" diameters with a variety of joint combinations available.

Fabricated pipe is made to custom lengths to meet specific project needs. Fabricated pipe can be cement, glass, or Protecto 401 lined to meet all applications.

Exterior coatings available include standard Bituminous, Themec primers and epoxies, as well as other specialty coatings as required.

McWane Ductile Treatment plant division can also provide customized take-offs, line drawings, and lay schedules as required for your projects.

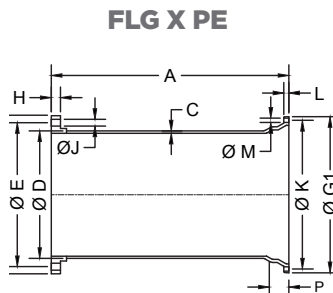
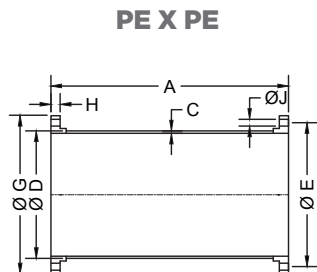
McWane Ductile has the ability to manufacture and provide fabricated products that meet all domestic USA-only requirements.

**FABRICATED
PIPE JOINT**



FLANGE PIPE DETAILS & DIMENSIONS

SIZE	A	B	C	Ø D	Ø E	Ø G	Ø G1	H	NO FLG BOLT HOLES	Ø J	Ø K	L	NO MJ BOLT HOLES	M	P
3	AS REQUIRED	AS REQUIRED	0.31	3.96	6.00	7.50	7.69	0.63	4	0.75	6.19	0.88	4	0.75	2.50
4			0.32	4.80	7.50	9.00	9.12	0.82	8	0.75	7.50	0.94	4	0.88	2.50
6			0.34	6.90	9.50	11.00	11.12	0.88	8	0.88	9.50	1.00	6	0.88	2.50
8			0.36	9.05	11.75	13.50	13.37	1.00	8	0.88	11.75	1.04	6	0.88	2.50
10			0.38	11.10	14.25	16.00	15.69	1.07	12	1.00	14.00	1.11	8	0.88	2.50
12			0.40	13.20	17.00	19.00	17.94	1.13	12	1.00	16.25	1.17	8	0.88	2.50
14			0.42	15.30	18.75	21.00	20.31	1.19	12	1.13	18.75	1.19	10	0.88	3.50
16			0.43	17.40	21.25	23.50	22.56	1.25	16	1.13	21.00	1.26	12	0.88	3.50
18			0.44	19.50	22.75	25.00	24.83	1.37	16	1.25	23.25	1.32	12	0.88	3.50
20			0.45	21.60	25.00	27.50	27.08	1.50	20	1.25	25.50	1.38	14	0.88	3.50
24			0.47	25.80	29.50	32.00	31.58	1.69	20	1.38	30.00	1.50	16	0.88	3.50
30			0.51	32.00	36.00	38.75	39.12	1.87	28	1.38	36.88	1.69	20	1.13	4.00
36			0.58	38.30	42.75	46.00	46.00	2.13	32	1.63	43.75	1.88	24	1.13	4.00
42			0.65	44.50	49.50	53.00	53.12	2.37	36	1.63	50.62	1.88	28	1.38	4.00
48			0.72	50.80	56.00	59.50	60.00	2.50	44	1.63	57.50	1.88	32	1.38	4.00



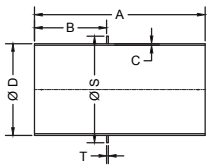
- ▶ Tolerance on length of FLG x FLG and FE x MJ pipe shall be +/- .125".
- ▶ Tolerance on length of FLG x PE shall be +/- .0625".
- ▶ Above material shall meet all applicable sections of ANSI A21.10, A21.15, A21.50, A21.51, B2.1, B16.1 / AWWA C110, C115, C150, C151 and all revisions thereto.
- ▶ Flanged pipe shall be ductile iron pipe with ductile iron flanges threaded on.
- ▶ Linings, if required, shall be in accordance with ANSI/AWWA A21.4/C104
- ▶ The mechanical joint bell for 30" & 36" sizes of ductile iron pipe have thicknesses different from those shown in ANSI A21.11, which are based on grey iron pipe. The reduced thickness provided a lighter-weight bell, which is compatible with the wall thickness of ductile iron pipe.
- ▶ Submitted material only. Consult engineer for application.
- ▶ 250 lb. faced and drilled flanges available upon request.

Additional configurations for joint connections are available. Contact a Sales Representative for details.

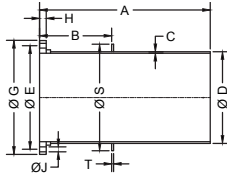
WALL PIPE DETAILS & DIMENSIONS

SIZE	A		B	C	Ø D	Ø E	Ø G	Ø G1	H	NO FLG BOLT HOLES	Ø J	Ø K	L	NO MJ BOLT HOLES	M	P	Ø S	T
	MIN	MAX																
3	AS REQUIRED	AS REQUIRED (MAX. LENGTH: 3'-36" = 17'-6", 42"/48" = 19'-6")	AS REQUIRED	0.31	3.96	6.00	7.50	7.69	0.63	4	0.75	6.19	0.88	4	0.75	2.50	6.50	0.50
4				0.32	4.80	7.50	9.00	9.12	0.82	8	0.75	7.50	0.94	4	0.88	2.50	7.40	0.50
6				0.34	6.90	9.50	11.00	11.12	0.88	8	0.88	9.50	1.00	6	0.88	2.50	9.50	0.50
8				0.36	9.05	11.75	13.50	13.37	1.00	8	0.88	11.75	1.04	6	0.88	2.50	12.00	0.50
10				0.38	11.10	14.25	16.00	15.69	1.07	12	1.00	14.00	1.11	8	0.88	2.50	14.10	0.50
12				0.40	13.20	17.00	19.00	17.94	1.13	12	1.00	16.25	1.17	8	0.88	2.50	16.25	0.50
14				0.42	15.30	18.75	21.00	20.31	1.19	12	1.13	18.75	1.19	10	0.88	3.50	18.40	0.50
16				0.43	17.40	21.25	23.50	22.56	1.25	16	1.13	21.00	1.26	12	0.88	3.50	21.00	0.50
18				0.44	19.50	22.75	25.00	24.83	1.37	16	1.25	23.25	1.32	12	0.88	3.50	23.10	0.50
20				0.45	21.60	25.00	27.50	27.08	1.50	20	1.25	25.50	1.38	14	0.88	3.50	25.70	0.50
24				0.47	25.80	29.50	32.00	31.58	1.69	20	1.38	30.00	1.50	16	0.88	3.50	30.00	0.50
30				0.51	32.00	36.00	38.75	39.12	1.87	28	1.38	36.88	1.69	20	1.13	4.00	36.96	0.63
36				0.58	38.30	42.75	46.00	46.00	2.13	32	1.63	43.75	1.88	24	1.13	4.00	43.40	0.63
42				0.65	44.50	49.50	53.00	53.12	2.37	36	1.63	50.62	1.88	28	1.38	4.00	50.00	1.00
48				0.72	50.80	56.00	59.50	60.00	2.50	44	1.63	57.50	1.88	32	1.38	4.00	56.50	1.00

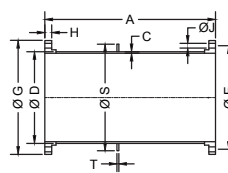
PE X PE



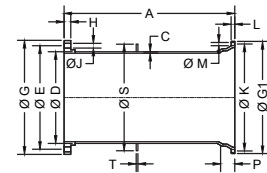
FLG X PE



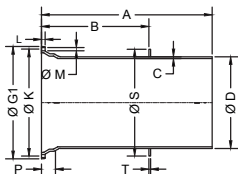
FLG X FLG



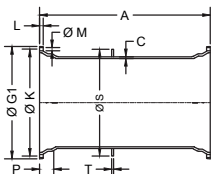
FLG X MJ



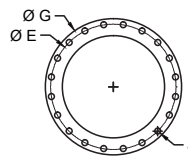
MJ X PE



MJ X MJ



FLANGE DETAIL



- ▶ Tolerance on location of waterstop shall be +/-0.125".
- ▶ All waterstops shall be welded on for a water tight seal.
- ▶ All flanges shall be ductile iron and threaded on ductile iron pipe per ANSI/AWWA A21.15/C115
- ▶ MJ x MJ shall have a ductile iron MJ bell threaded on ductile iron pipe.
- ▶ Linings, if required, shall be in accordance with ANSI/AWWA A21.4/C104

- ▶ Above material shall meet all applicable sections of ANSI A21.10, A21.15, A21.50, A21.51, B2.1, B16.1 / AWWA C110, C115, C150, C151 and all revisions thereto.
- ▶ Submitted material only. Consult engineer for application.
- ▶ 250 lb. faced and drilled flanges available upon request.

Additional configurations for joint connections are available. Contact a Sales Representative for details.



POCKET ENGINEER

Available for iOS + Android
or online at pe.mcwane.com

CONNECT WITH US ON



NEW JERSEY
183 Sitgreaves St.
Phillipsburg, NJ 08865
908-454-1161

OHIO
2266 S. 6th St.
Coshocton, OH 43812
740-622-6651

UTAH
1401 E. 2000 South
Provo, UT 84606
801-373-6910



CANADA
1757 Burlington St. East
Hamilton, ON L8H-3L5
905-547-3251

REVISION 1.0 2019