



**McWANE
DUCTILE**

IRON STRONG

HOW TO REPAIR GLASS LINING TIP SHEET

The Glass Lining Repair Kit is a product of



Glass Lining in Ductile iron pipe has often been the specified lining for situations such as a sludge line or when harmful chemicals are present. There may be occasions in the field when patching of the glass lining is necessary.



1. GATHER MATERIALS

- Paint Brush
- Sandpaper
- Stir Stick
- Touch-Up Part A (Large Can)
- Touch-Up Part B (Small Can)
- Kit Instructions
- Scrapper or Grinder
- Wire Brush
- Clean Rag
- Proper PPE



2. REMOVE BURRS

To avoid cutting yourself, smooth edges before starting the process. Remove all burrs and damaged lining caused by field cutting or by improper handling. You can do this with a scrapper and a wire brush. Remove all asphalt, grease, dirt, dust, etc.



3. SAND SURFACE

After removing the burrs, roughen up the glass surface with sand paper, similar to roughening up a piece of wood prior to painting. Do this for 1 inch beyond the problem area as well. This ensures epoxy adheres and creates a smooth transition from factory applied material to new material.



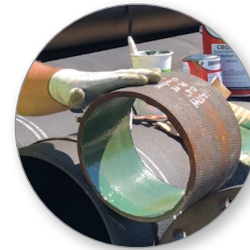
4. MIX PART A & B

Glass Repair Kit is a 2-part epoxy. Pour the contents of small container (A) and contents of large container (B) into 1 gallon can provided. Thoroughly mix the contents together and use within 1 hour. If using less than full contents, see mixing ratios printed on can.



5. APPLY MATERIAL

After mixing, apply materials to clean, dry, prepared surface using a paint brush. Be sure temperature is above 40°F. Dab brush to fill in rough spots then smooth out. Overlap new material over factory-applied material beyond problem area by 1 inch for a smooth transition and to ensure proper sealing.



6. ALLOW TO DRY

Allow at least 24 hours before handling as material will be tacky. For more detailed instructions and to view a helpful video, check out our blog at **McWaneDuctile.com/Blog**.

Good practices are also included in the Glass Repair Kit technical data sheet.

